



## Family Reunion Package | The Nature Inn at Bald Eagle

### ALL-INCLUSIVE FAMILY REUNION PACKAGE

**all-inclusive pricing of \$399 per adult | \$99 per child ages 5-12 | children 4 and under are free**

Lodging accommodations and exclusive access to the inn amenities throughout stay:

- Two night stay in overnight guest rooms w/ 15% group discount
- WiFi throughout inn & guest rooms
- All food & beverage taxes & gratuities
- All lodging taxes & fees
- Split billing available

Full-service catering throughout stay:

- Full hot breakfast buffet each morning
- Pizza Dinner Buffet - First Evening
- Deli Grab & Go Luncheon - Second Day
- BBQ Dinner Buffet - Second Evening
- S'mores kit both nights of stay
- Package long beverage station w/ coffee, hot water, iced water & iced tea

#### Family Reunion Package Requirements & Additional Information

- Exclusive access to our lakeside lodge couple with the amenities of Bald Eagle State Park
- Minimum guest count of 30 adults or more for all family reunions and requires all sixteen (16) guest rooms to be reserved by family reunion group
- Package pricing excludes holidays and all weekend dates
- Additional reunion guests that are not staying at the inn can be added for meals, please inquire with our meeting planner for additional pricing
- Our event coordinator will work with the family reunion organizer to finalize rooming assignments and meal serve times for gathering to ensure your family reunion runs perfectly
- Lodging, facility fees, gratuity and applicable taxes are included in per person pricing

**Address** | 201 Warbler Way, Howard, PA 16841  
**Phone** | 814.625.2879

THE NATURE INN  
:: AT BALD EAGLE ::

## FAMILY REUNION PACKAGE MENUS



# family reunion package menus

*Our family reunion packages include full catering throughout your family's stay. The menus are predetermined and accommodations can be made for any dietary restrictions that you or your guests may have. A full hot breakfast buffet is included each morning of your stay.*

### *pizza night buffet*

House-made Pizzas (cheese & pepperoni)  
Greek & Caesar Salads  
NY Cheesecake

### *luncheon buffet*

House Sliced Deli Meats  
Lettuce, Tomato & Onion  
Black Bean Quinoa Salad  
Assorted Sun Chips  
Artisanal Breads  
Homemade Cookies

### *barbecue dinner buffet*

Vegetables & White Bean Dip  
House Smoked Pulled Pork  
Spicy BBQ Chicken  
Grilled Burgers  
Apple Kale Slaw  
Creamy Coleslaw  
Red Potato Salad  
House Mac & Cheese  
Charred Green Beans  
Brownies w/ Creamery Ice Cream



## SOCIAL RETREAT PACKAGES



# guest accommodations

As a family reunion destination, you and your guests will enjoy **exclusive** use of the entire lodge for your family gathering. By booking your social retreat with us, you are **committing** that you and your guests will be booking all **sixteen (16)** of our overnight guest rooms for **both nights of your family reunion**.

### OUR ACCOMMODATIONS

Our rooms range in size from singles, with one queen bed, up to large suites which comfortably sleep six in two separate queen bedrooms plus a sleeper sofa in the shared living room. We've found that social retreat groups can plan to feasibly sleep up to **30- 50 guests onsite** comfortably. If you have a need for additional accommodations, your event planner will be able to provide you with recommendations for suitable local lodging options for them as well.



### LODGING DISCOUNTS

We extend a 15% group lodging discount on all rooms booked in conjunction with your family reunion gathering. This discount is already factored into the per person price provided for our family reunion package.

### ROOMING ASSIGNMENTS

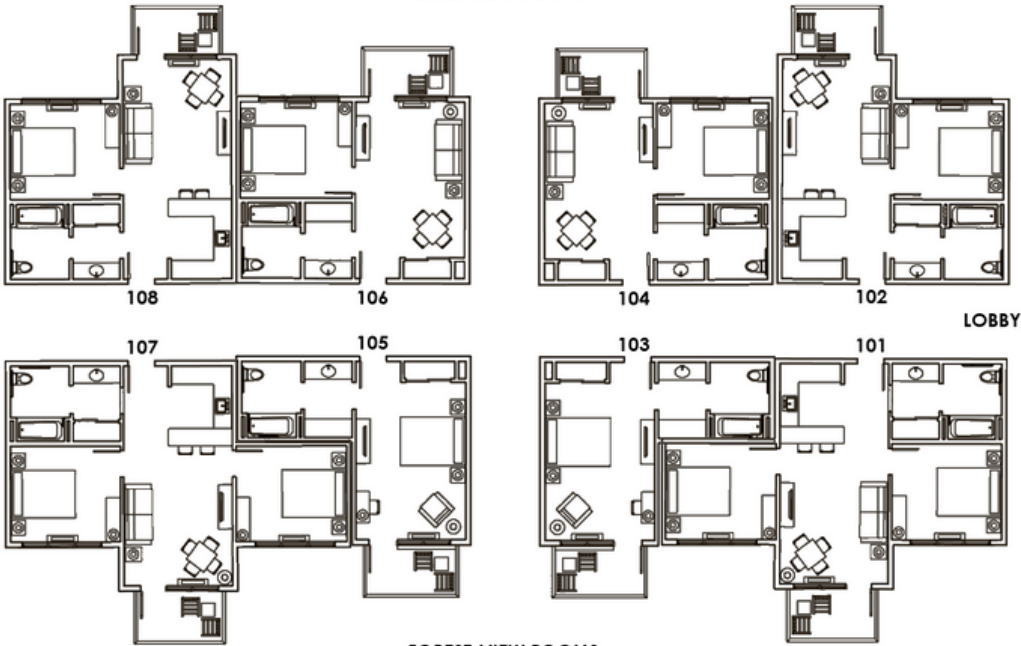
You will be provided with a lodging assignment worksheet which details room configurations, sleeping capacities and views. These will be invaluable as you determine where to assign each of your retreat attendees and whether each participant is comfortable sharing a room or if they'd prefer their own private guest room. The final rooming assignments are due to your event coordinator at least one month prior to your retreat date. We will then utilize your rooming assignment list to create individual room key cards that will provide the room information for each participant.

SOCIAL RETREAT PACKAGES

# guest room layouts

## first floor diagram

LAKE-VIEW ROOMS



### Coordinator Notes:

All guest rooms feature a mini fridge, microwave and coffee pot. Small and Large Suites offer kitchenettes with a small toaster oven, counter space with seating and fully stocked cupboards

Every guest room features a walk out balcony or patio area

Although our entire facility is ADA accessible, the private bedrooms in the suite style rooms have a more narrow space alongside the beds, which can create difficulties for guests in wheelchairs to access the bed

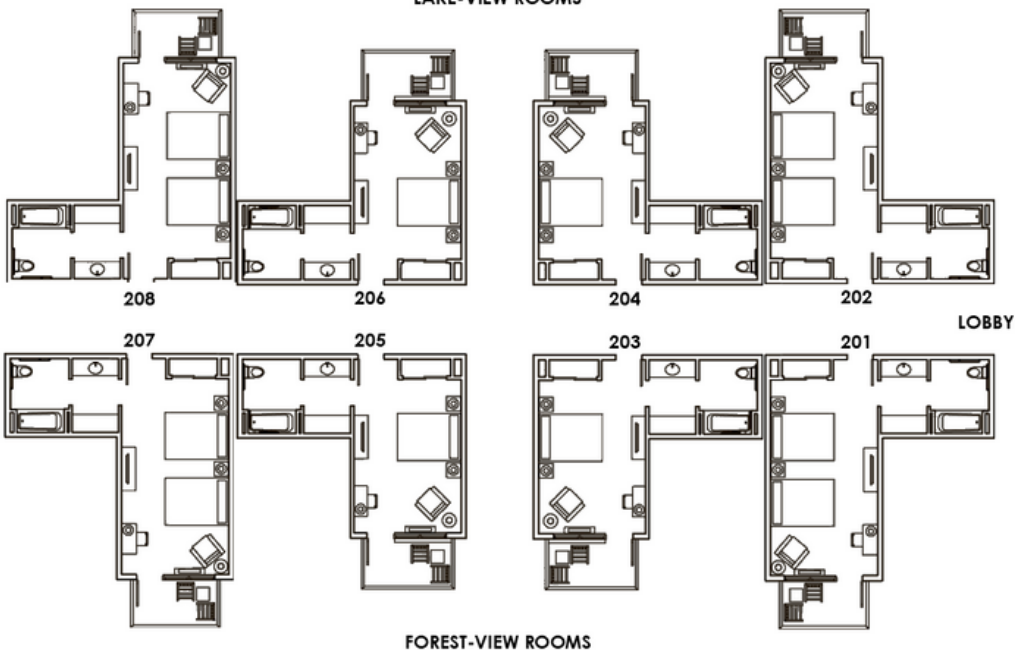
Every room has a hairdryer, iron and ironing board

Need to add an extra guest in a room over the occupancy noted on the "Rooming Assignments" page? The inn has memory foam rollaway beds for an additional \$15 per night, cribs and pack n plays for the little ones at no additional charge or your guests can bring their own air mattress!

Check in is after 3pm and check out is before 11am

## second floor diagram

LAKE-VIEW ROOMS



FOREST-VIEW ROOMS

SOCIAL RETREAT PACKAGES

# rooming assignments

## FIRST FLOOR | LAKE VIEW ROOMS

### 102 Hummingbird | Small Suite | Sleeps 4

A private bedroom with one queen bed and a living room area with a sleeper sofa, kitchenette

Occupants: \_\_\_\_\_

### 104 Wood Duck | Basic Suite | Sleeps 4

A private bedroom with one queen bed and a living room area with a sleeper sofa

Occupants: \_\_\_\_\_

### 106 Woodcock | Basic Suite | Sleeps 4

A private bedroom with one queen bed and a living room area with a sleeper sofa

Occupants: \_\_\_\_\_

### 108 Woodpecker | Small Suite | Sleeps 4

A private bedroom with one queen bed and a living room area with a sleeper sofa, kitchenette

Occupants: \_\_\_\_\_

## FIRST FLOOR | FOREST VIEW ROOMS

### 101 Bald Eagle | Large Suite | Sleeps 6

Two private bedrooms with one queen bed in each and a living room area with a sleeper sofa, kitchenette

Occupants: \_\_\_\_\_

### 103 Mallard | Single Room | Sleeps 2

A standard room with one queen bed, arm chair and desk

Occupants: \_\_\_\_\_

### 105 Cuckoo | Single Room | Sleeps 2

A standard room with one queen bed, arm chair and desk

Occupants: \_\_\_\_\_

### 107 Ruffed Grouse | Large Suite | Sleeps 6

Two private bedrooms with one queen bed in each and a living room area with a sleeper sofa, kitchenette

Occupants: \_\_\_\_\_

## SECOND FLOOR | LAKE VIEW ROOMS

### 202 Great Horned Owl | Double Room | Sleeps 4

A standard room with two queen beds, arm chair and desk

Occupants: \_\_\_\_\_

### 204 Robin | Single Room | Sleeps 2

A standard room with one queen bed, arm chair and desk

Occupants: \_\_\_\_\_

### 206 Green Heron | Single Room | Sleeps 2

A standard room with one queen bed, arm chair and desk

Occupants: \_\_\_\_\_

### 208 Teal | Double Room | Sleeps 4

A standard room with two queen beds, arm chair and desk

Occupants: \_\_\_\_\_

## SECOND FLOOR | FOREST VIEW ROOMS

### 201 Screech Owl | Double Room | Sleeps 4

A standard room with two queen beds, arm chair and desk

Occupants: \_\_\_\_\_

### 203 Blue Jay | Single Room | Sleeps 2

A standard room with one queen bed, arm chair and desk

Occupants: \_\_\_\_\_

### 205 Oriole | Single Room | Sleeps 2

A standard room with one queen bed, arm chair and desk

Occupants: \_\_\_\_\_

### 207 Barred Owl | Double Room | Sleeps 4

A standard room with two queen beds, arm chair and desk

Occupants: \_\_\_\_\_



