

## Winter Social Retreat Packages | Base Pricing - What You Pay

### OPTION 1

#### WEEKEND SOCIAL RETREAT PACKAGE

**all-inclusive price of \$394 per person:**

Lodging accommodations and event space throughout stay:

- Shared & private guest room options
- Two night stay in overnight guest rooms w/ 15% group discount (Fri & Sat)
- WiFi throughout inn & guest rooms
- All food & beverage taxes & gratuities
- All lodging taxes & fees
- Discrete billing available

Full-service catering throughout stay:

- Full hot breakfast buffet each morning
- Dinner buffets both nights w/ one entree & three sides
- Lunch salad & soup buffet during full day of retreat
- Weekend long beverage & whole fruit snack station

### OPTION 2

#### WEEKDAY SOCIAL RETREAT PACKAGE

**all-inclusive price of \$324 per person:**

Lodging accommodations and event space throughout stay:

- Shared & private guest room options
- Two night stay in overnight guest rooms w/ 15% group discount (Sun-Thurs)
- WiFi throughout inn & guest rooms
- All food & beverage taxes & gratuities
- All lodging taxes & fees
- Discrete billing available

Full-service catering throughout stay:

- Full hot breakfast buffet each morning
- Dinner buffets both nights w/ one entree & three sides
- Lunch salad & soup buffet during full day of retreat
- Weekend long beverage & whole fruit snack station

*Package pricing available during winter season only, excludes holidays. Minimum guest count of 25 or more for all social retreats and requires entire inn (all 16 guest rooms) to be reserved by group. Additional event guests that are not staying at the inn can be added, please inquire with our meeting planner for base pricing. Lodging, event space rental, gratuity & applicable taxes included in per person pricing.*

**Address** | 201 Warbler Way, Howard, PA 16841  
**Phone** | 814.625.2879

THE NATURE INN  
:: AT BALD EAGLE ::



## Winter Social Retreat Packages | Market Pricing - What You Charge

### OPTION 1

#### WEEKEND SOCIAL RETREAT PACKAGE

**all-inclusive sale price of \$475 per person:**

Sell your upcoming two night weekend social retreat to potential customers at a minimum 20% markup to maximize your profits.

**Example Pricing:**

- You pay \$394 per guest, they pay you \$475 per guest (at a ~20% markup)
- \$2,025 profit at 25 guests

### OPTION 2

#### WEEKDAY SOCIAL RETREAT PACKAGE

**all-inclusive sale price of \$389 per person:**

Sell your upcoming two night weekday social retreat to potential customers at a minimum 20% markup to maximize your profits.

**Example Pricing :**

- You pay \$324 per guest, they pay you \$389 per guest (at a ~20% markup)
- \$1,625 profit at 25 guests

What we provide to you to easily market & plan your upcoming retreat:

- Exclusive access to our Lakeside Lodge coupled with the amenities of Bald Eagle State Park
- Discrete billing to guests - no pricing information provided to guests during their stay
- Easy social retreat planning worksheets to provide you with step by step decision making throughout the planning process
- The flexibility to add items to the standard package to fit any retreat's needs at easy, all-inclusive pricing per guest (for example: additional dinner entrees, additional lunch on departure day, etc)
- Event space set to your choice of configuration with included A/V & equipment available, such as: fixed screen & projector, flip charts & white boards w/ markers, dedicated bandwidth for presenter/organizer & high speed wireless internet for all attendees
- A dedicated event coordinator who works with you from the day you book, throughout the planning process to ensure your retreat runs perfectly

**Address** | 201 Warbler Way, Howard, PA 16841  
**Phone** | 814.625.2879

THE NATURE INN  
:: AT BALD EAGLE ::

## SOCIAL RETREAT PACKAGES

# some odds & ends

## *lunch menu*

### **SALAD & SOUP**

**choice of two signature salads:** tossed, caesar, greek, cranberry almond or spinach  
**choice of two proteins:** grilled chicken, flank steak +\$2, cubed ham, grilled portabella, hard boiled eggs  
or grilled tofu  
served w/ two chef's choice soups, fruit salad, sun chips, rolls & butter

\*lunch can be added to departure day for \$18 per person, all-inclusive - second lunch menu can be selected by organizer from menu provided by Nature Inn event coordinator

## *example timeline*

### **DAY 1 - ARRIVAL**

**1:00 pm** - Retreat organizers may arrive to begin setting up event spaces as needed

**3:00 pm** - Retreat guests may begin checking in to rooms

\*welcome/intro programming

**6:00 pm** - Dinner buffet served

\*evening programming

**8:30 pm** - Fire place lit in Great Room

### **DAY 2 - FULL DAY**

**7:00 - 10:00 am** - Breakfast buffet served

\*morning programming

**12:00 pm** - Lunch salad & soup buffet served

\*afternoon programming

**5:00 pm** - Dinner buffet served

\*evening programming

**7:30 pm** - Fire place lit in Great Room

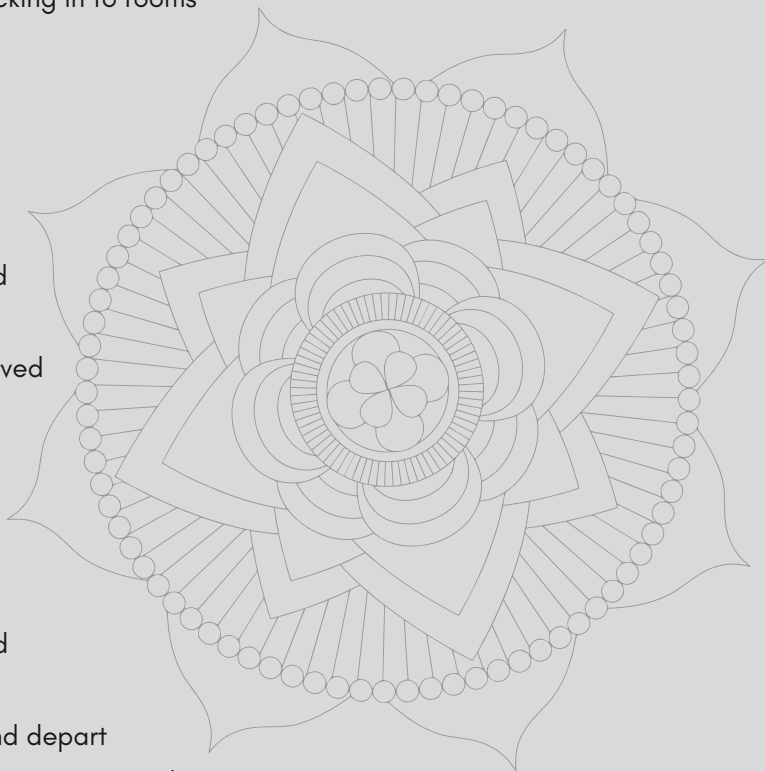
### **DAY 3 - DEPARTURE**

**7:00 - 10:00 am** - Breakfast buffet served

\*wrap up/departure programming

**11:00 am** - Overnight guests check out and depart

\*can add lunch to this day as well w/ programming ending at 2pm



Above is an example of a standard timeline for our social retreats. These times can be altered to meet your retreat's needs and are simply a guideline to get your planning started. Any unspecified times can be utilized for retreat programming!

## SOCIAL RETREAT PACKAGES

# dinner, simply

## hot entrees

**PANCETTA ROASTED CHICKEN**  
*walnuts, root vegetables & parmesan*

**CHICKEN MARSALA**  
*baby bellas & reduced marsala*

**ORCHARD CHOP**  
*apple, cherry & fontina stuffed pork chop*

**PORK TENDERLOIN**  
*roasted w/ ginger & molasses*

**BEEF TENDERLOIN +\$6**  
*hand carved, grilled & topped w/ wild mushrooms*

**LOW COUNTRY SHRIMP**  
*spicy blackened shrimp over choice of penne alfredo or parmesan grits*

**VEGAN PEPPER**  
*stuffed w/ quinoa, spinach, corn & black beans*

**VEGETABLE WELLINGTON**  
*grilled veggies & quinoa in puff pastry w/ sun-dried tomato cream sauce*

**TRADITIONAL STUFFED CHICKEN**  
*oven roasted w/ dressing & gravy*

**GLAZED HAM**  
*slow roasted w/ sweet mustard glaze*

**BBQ BEEF BRISKET +\$2**  
*house smoked & hand carved w/ signature BBQ sauce*

**ROAST BEEF**  
*slow roasted w/ horseradish cream*

**GRILLED SALMON**  
*ginger glaze w/ pineapple salsa*

**SCALLOPS & WILD MUSHROOMS +\$6**  
*seared scallops & wild mushrooms over creamy polenta w/ lemon caper beurre blanc*

**VEGETABLE LASAGNA**  
*roasted vegetables w/ sun-dried tomato cream sauce*

**CHAR GRILLED KEBABS**  
*choice of two: beef & broccoli, chicken & mushroom, shrimp & pineapple or seasonal vegetables*

Social Retreat Packages include **one selection** from the hot entrees and **three options** from sides, salads & desserts. Dinner rolls, iced tea & water included with all dinner selections.

add an additional entree for **\$6** per guest  
add an additional side, salad or dessert for **\$4** per guest

## sides, salads & desserts

tossed salad  
caesar salad  
greek salad  
spinach salad  
fruit salad  
whipped sweet potatoes  
twice baked potatoes  
roasted potatoes with garlic & herb

mashed potatoes  
macaroni & cheese  
wild rice  
vegetable medley  
steamed broccoli  
glazed carrots  
roasted root vegetables  
charred green beans  
soup du jour +\$3

ny style cheesecake  
chocolate mousse  
pumpkin pie w/ walnut topping  
bourbon cherries over vanilla ice cream  
balsamic infused strawberry shortcake  
mixed berry cobbler a la mode  
seasonal pie

## SOCIAL RETREAT PACKAGES



# guest accommodations

As a social retreat destination, you and your guests will enjoy **exclusive** use of the entire lodge for your retreat gathering. By booking your social retreat with us, you are **committing** that you and your guests will be booking all **sixteen (16)** of our overnight guest rooms for **both nights of your retreat**.

### OUR ACCOMMODATIONS

Our rooms range in size from singles, with one queen bed, up to large suites which comfortably sleep six in two separate queen bedrooms plus a sleeper sofa in the shared living room. We've found that social retreat groups can plan to feasibly sleep up to **25 - 40 guests onsite** comfortably. If you have a need for additional accommodations, your event planner will be able to provide you with recommendations for suitable local lodging options for them as well.

### LODGING DISCOUNTS

We extend a 15% group lodging discount on all rooms booked in conjunction with your social retreat gathering. This discount is already factored into the base price provided for each of our social retreat package options.

### ROOMING ASSIGNMENTS

You will be provided with a lodging assignment worksheet which details room configurations, sleeping capacities and views. These will be invaluable as you determine where to assign each of your retreat attendees and whether each participant is comfortable sharing a room or if they'd prefer their own private guest room. The final rooming assignments are due to your event coordinator at least one month prior to your retreat date. We will then utilize your rooming assignment list to create individual room key cards that will provide the room information for each participant. No billing information will be provided on the participant check-in materials.

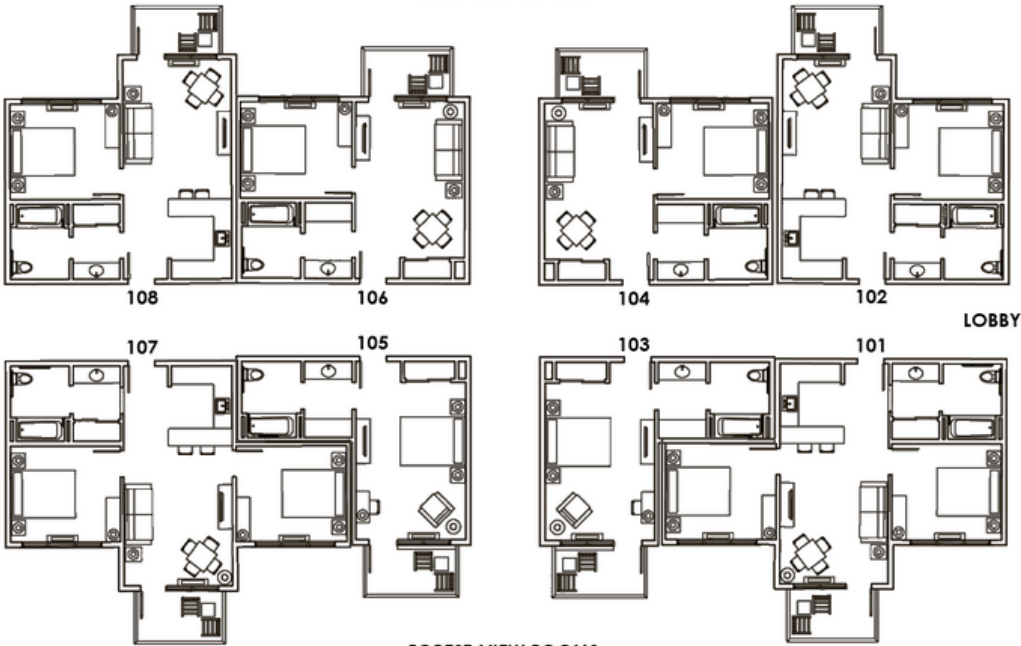


SOCIAL RETREAT PACKAGES

# guest room layouts

## first floor diagram

LAKE-VIEW ROOMS



### Coordinator Notes:

All guest rooms feature a mini fridge, microwave and coffee pot. Small and Large Suites offer kitchenettes with a small toaster oven, counter space with seating and fully stocked cupboards

Every guest room features a walk out balcony or patio area

Although our entire facility is ADA accessible, the private bedrooms in the suite style rooms have a more narrow space alongside the beds, which can create difficulties for guests in wheelchairs to access the bed

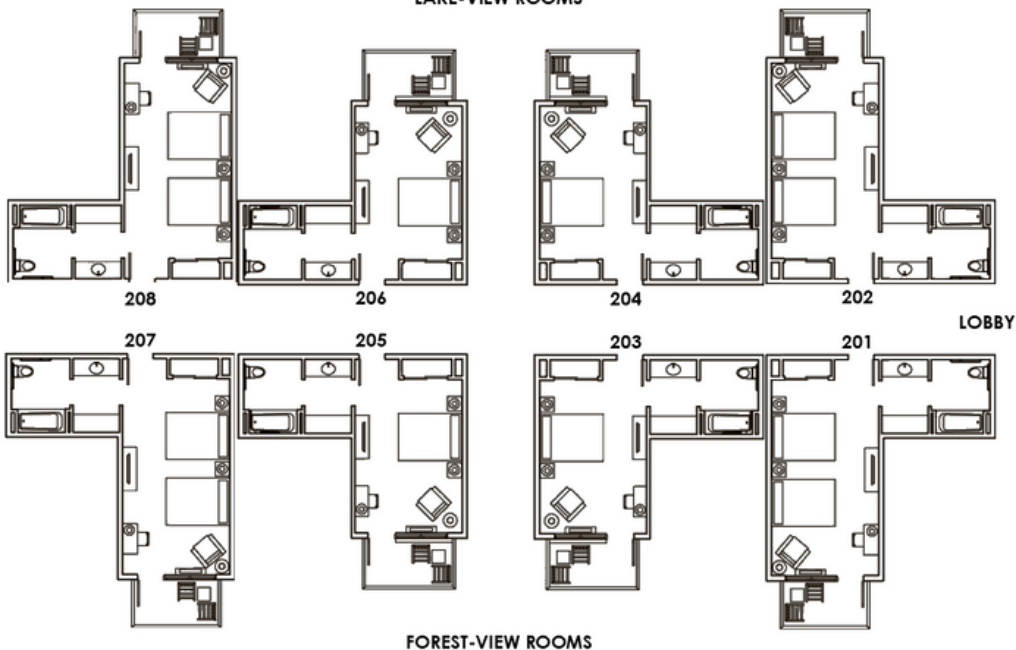
Every room has a hairdryer, iron and ironing board

Need to add an extra guest in a room over the occupancy noted on the "Rooming Assignments" page? The inn has memory foam rollaway beds for an additional \$15 per night, cribs and pack n plays for the little ones at no additional charge or your guests can bring their own air mattress!

Check in is after 3pm and check out is before 11am

## second floor diagram

LAKE-VIEW ROOMS



FOREST-VIEW ROOMS

SOCIAL RETREAT PACKAGES

# rooming assignments

## FIRST FLOOR | LAKE VIEW ROOMS

### 102 Hummingbird | Small Suite | Sleeps 4

A private bedroom with one queen bed and a living room area with a sleeper sofa, kitchenette

Occupants: \_\_\_\_\_

### 104 Wood Duck | Basic Suite | Sleeps 4

A private bedroom with one queen bed and a living room area with a sleeper sofa

Occupants: \_\_\_\_\_

### 106 Woodcock | Basic Suite | Sleeps 4

A private bedroom with one queen bed and a living room area with a sleeper sofa

Occupants: \_\_\_\_\_

### 108 Woodpecker | Small Suite | Sleeps 4

A private bedroom with one queen bed and a living room area with a sleeper sofa, kitchenette

Occupants: \_\_\_\_\_

## FIRST FLOOR | FOREST VIEW ROOMS

### 101 Bald Eagle | Large Suite | Sleeps 6

Two private bedrooms with one queen bed in each and a living room area with a sleeper sofa, kitchenette

Occupants: \_\_\_\_\_

### 103 Mallard | Single Room | Sleeps 2

A standard room with one queen bed, arm chair and desk

Occupants: \_\_\_\_\_

### 105 Cuckoo | Single Room | Sleeps 2

A standard room with one queen bed, arm chair and desk

Occupants: \_\_\_\_\_

### 107 Ruffed Grouse | Large Suite | Sleeps 6

Two private bedrooms with one queen bed in each and a living room area with a sleeper sofa, kitchenette

Occupants: \_\_\_\_\_

## SECOND FLOOR | LAKE VIEW ROOMS

### 202 Great Horned Owl | Double Room | Sleeps 4

A standard room with two queen beds, arm chair and desk

Occupants: \_\_\_\_\_

### 204 Robin | Single Room | Sleeps 2

A standard room with one queen bed, arm chair and desk

Occupants: \_\_\_\_\_

### 206 Green Heron | Single Room | Sleeps 2

A standard room with one queen bed, arm chair and desk

Occupants: \_\_\_\_\_

### 208 Teal | Double Room | Sleeps 4

A standard room with two queen beds, arm chair and desk

Occupants: \_\_\_\_\_

## SECOND FLOOR | FOREST VIEW ROOMS

### 201 Screech Owl | Double Room | Sleeps 4

A standard room with two queen beds, arm chair and desk

Occupants: \_\_\_\_\_

### 203 Blue Jay | Single Room | Sleeps 2

A standard room with one queen bed, arm chair and desk

Occupants: \_\_\_\_\_

### 205 Oriole | Single Room | Sleeps 2

A standard room with one queen bed, arm chair and desk

Occupants: \_\_\_\_\_

### 207 Barred Owl | Double Room | Sleeps 4

A standard room with two queen beds, arm chair and desk

Occupants: \_\_\_\_\_





**YOUR NOTES**

RETREAT TIMELINE NOTES:

---

---

---

---

---

---

---

---

---

---

---

---

---

---

---

---

---

---

---

---

---

---

---

SETUP & EQUIPMENT NOTES:

---

---

---

---

---

---

---

---

---

---

---

---

---

---

---

**YOUR NOTES**

GENERAL NOTES:

A series of horizontal dashed lines for writing notes.